



NO BOUNDARIES

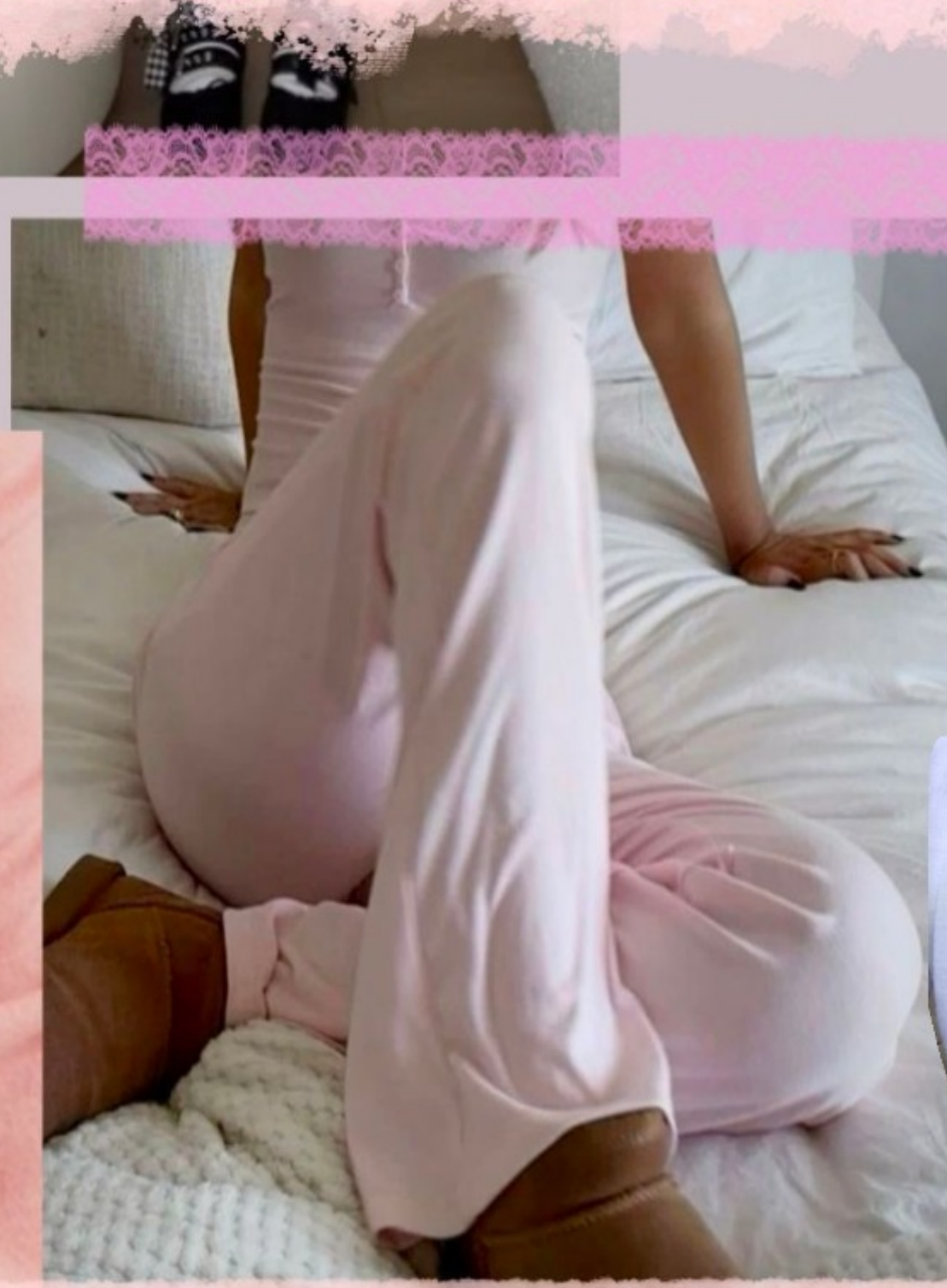
Fall '24

BALLET CORE

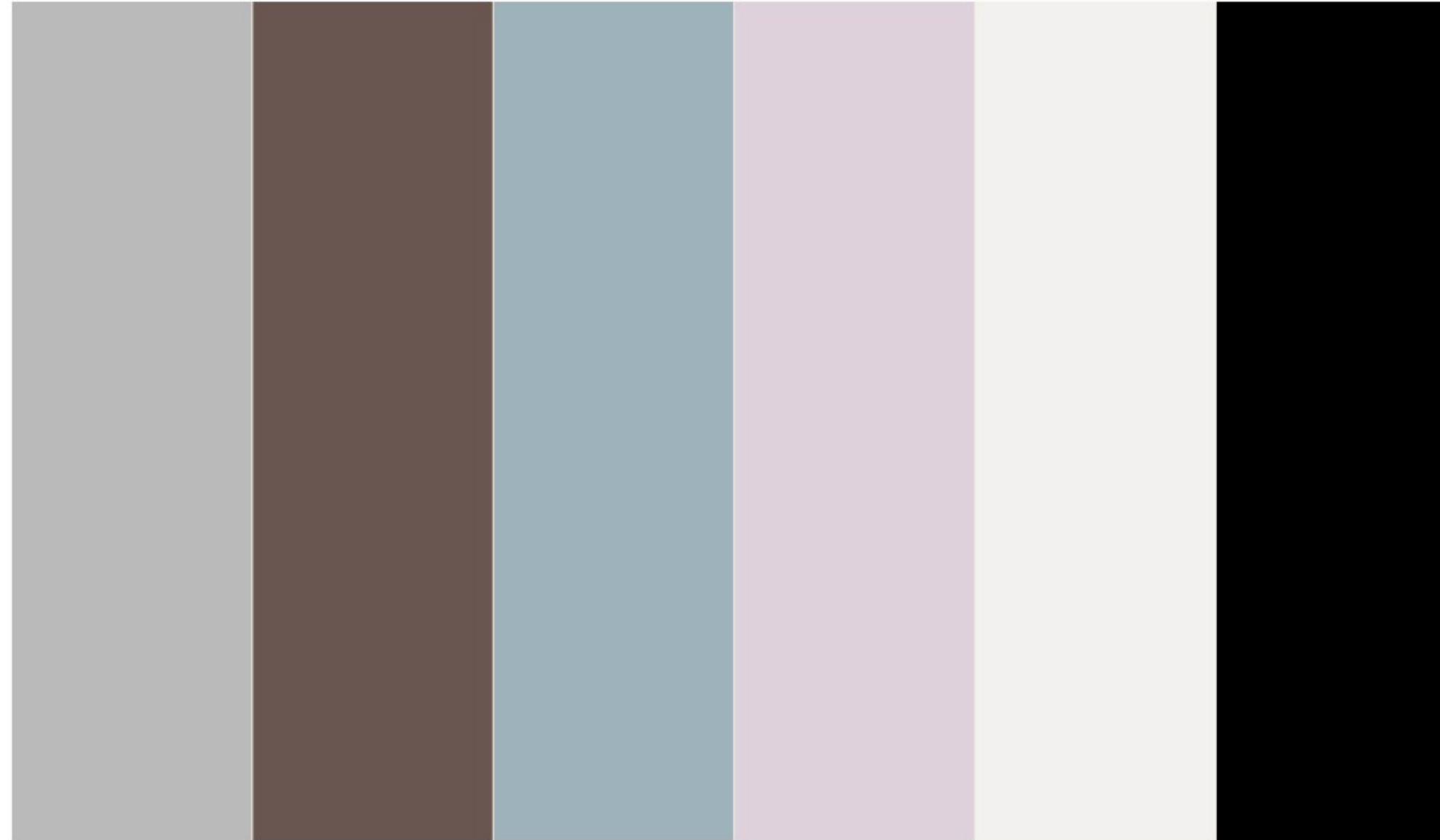
She's a graceful, energetic, and full heartedly femme. Infuse ballet references with soft romantic energy: Think elegant, ballerina silhouettes, tight slinky proportions and lace details with a whimsical, girly attitude. A muted, pastel palette, brushed, lived-in ribs, and bow trims evolve Y2K references with a coquette touch. Soft, ruched cottons, lush waffles and ethereal touches of playful, vintage femme give her a spirited, delicate touch, all grounded with new go-to basics in loungewear for a distinctively No Boundaries attitude.



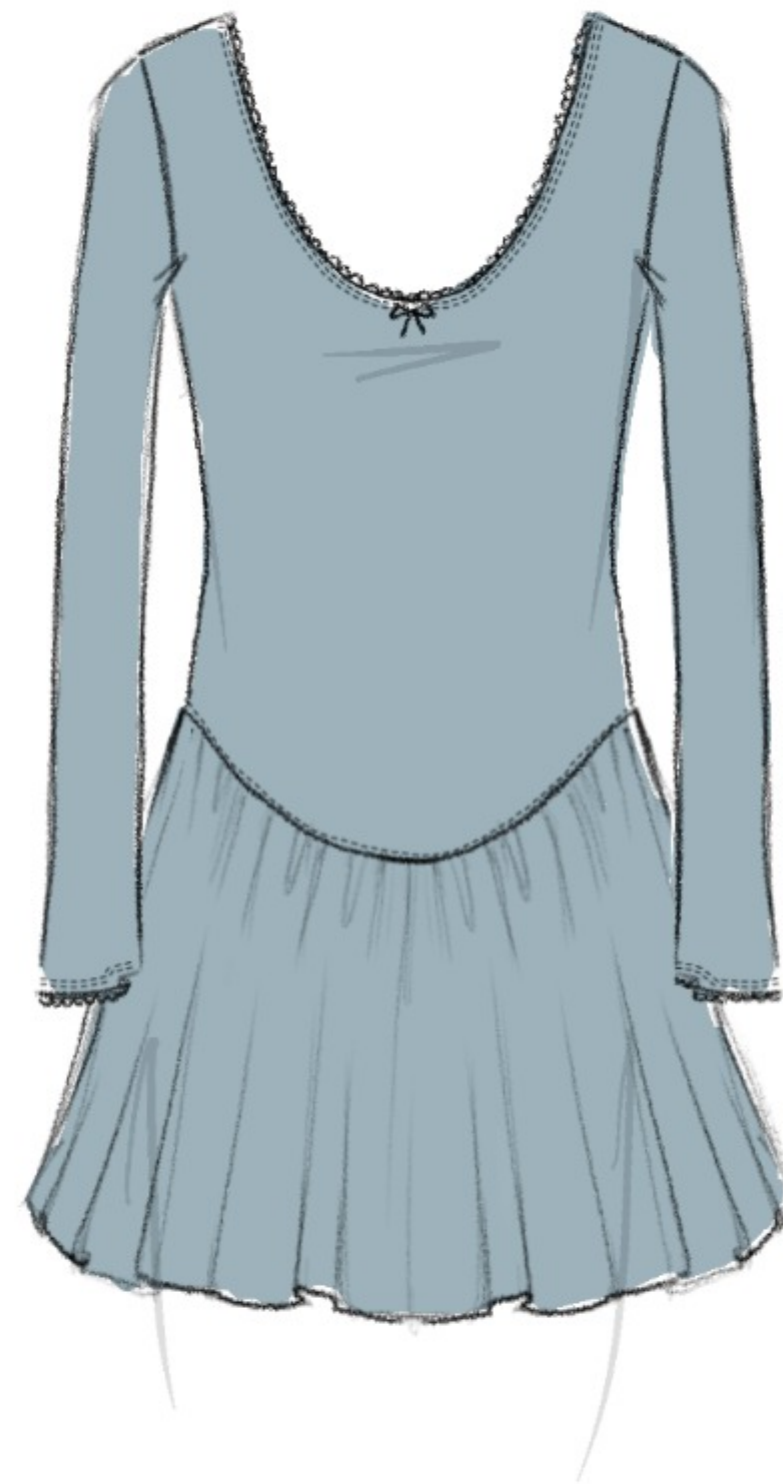
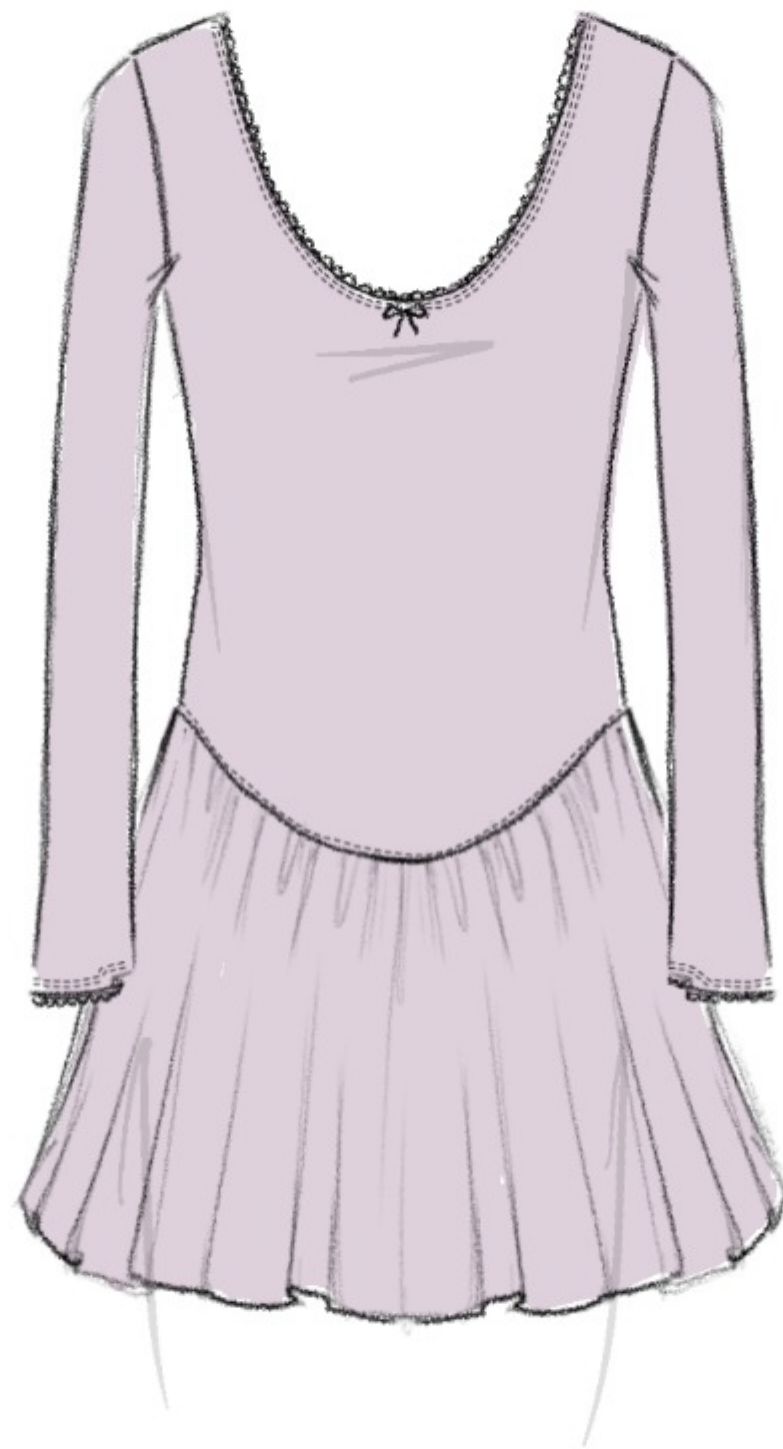
BALLET CORE



KEY COLOR AND FABRIC

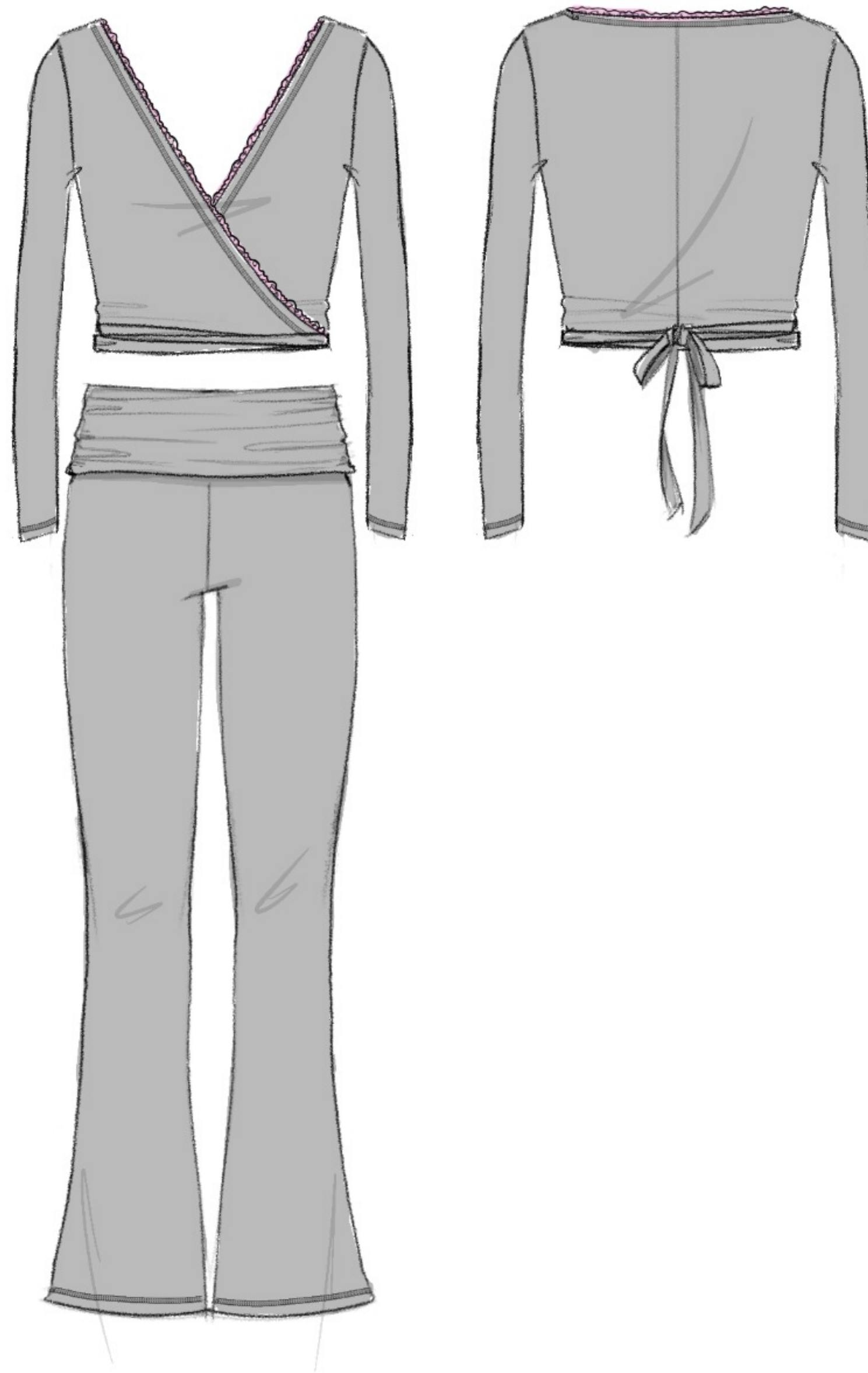


OCCASION: BRUNCH



DRESS: LONG SLEEVE DROP WAIST DRESS WITH PICOT ELASTIC AND BOW TRIM DETAIL
FABRIC: 2X2 RIB

OCCASION: TO AND FROM WORKOUT



TOP: LONG SLEEVE WRAP TOP WITH LACE TRIM DETAIL

FABRIC: LUXE JERSEY

BOTTOM: FLARE LEGGING WITH RUCHED FOLD OVER WAISTBAND

FABRIC: LUXE JERSEY

granola girly

She embodies a relaxed, carefree vibe, reflecting an effortless naturalness. Imagine her as the epitome of earthy tranquility, with easy, timeless silhouettes, oversized proportions, and raw details that evoke the feeling of an untamed wilderness. Drawing inspiration from natural autumnal hues and incorporating workworn, lived-in washes, and tarnished textures, her style merges classic references with a gritty, industrial edge. From sheer, lightweight cottons to sumptuously soft waffle knits, and down-to-earth touches, she radiates a raw yet delicate charm. Anchored by new essentials like sweats and utility pants, her look embodies a distinctive No Boundaries attitude.



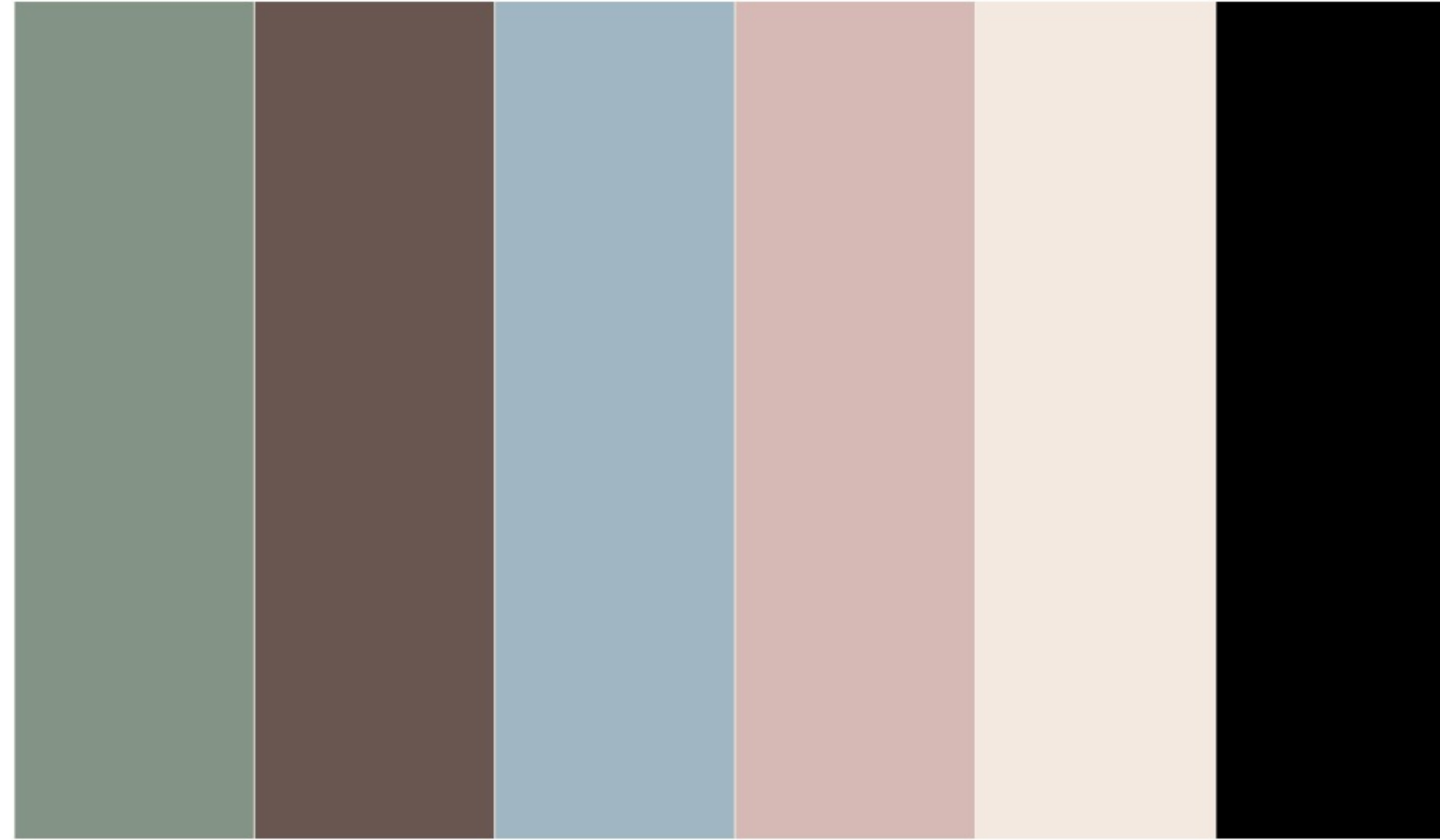
granola girly



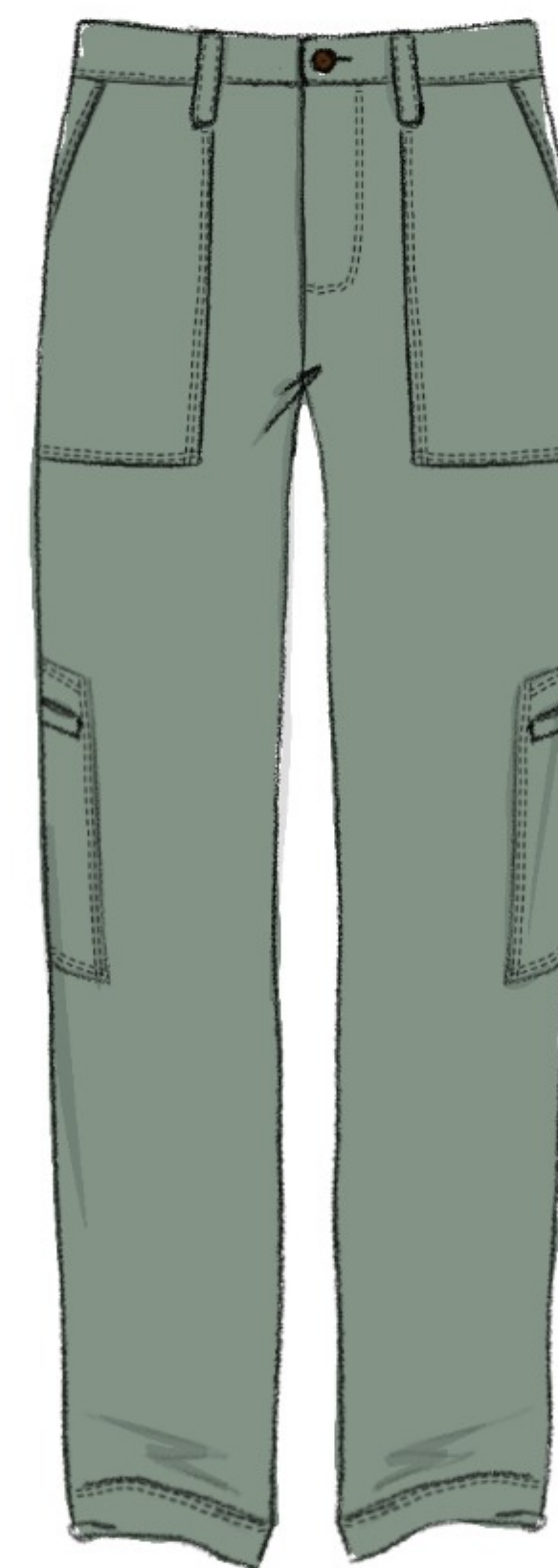
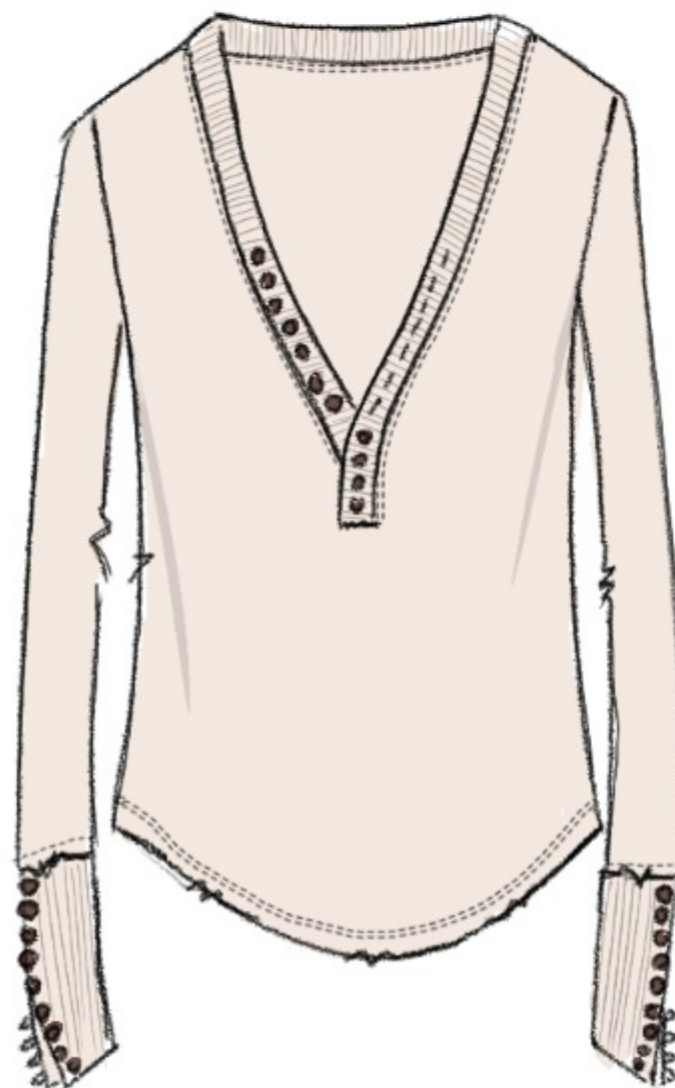
OVERSIZED
AND
COMFY VIBES
♡



KEY COLOR AND FABRIC



OCCASION: OFF TO CLASS



JACKET: CROPPED OVERSIZED SHACKET WITH WOVEN COLLAR, POCKETS, AND CUFFS. FAUX HORN BUTTON DETAIL

FABRIC: WAFFLE X WOVEN COTTON COMBO

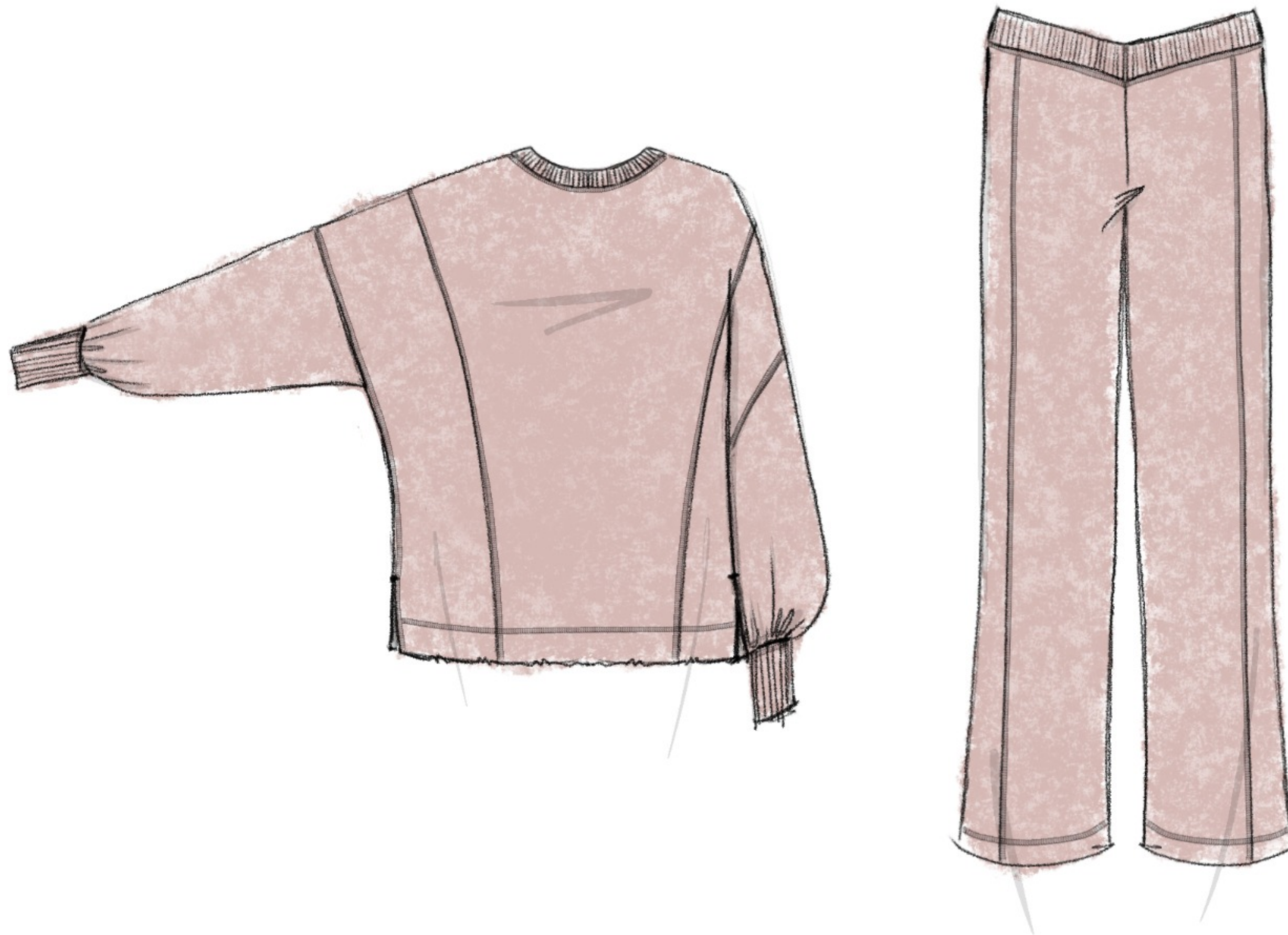
TOP: SPLIT NECK HENLEY WITH RIB NECKBAND AND CUFFS. BUTTON AND LOOP DETAIL AT CUFF

FABRIC: COTTON SLUB KNIT

BOTTOMS: UTILITY PANT WITH PATCH POCKET DETAILS

FABRIC: STRETCH TWILL

OCCASION: RELAXING / STUDY SESH



TOP: PIGMENT GARMENT DYE SWEATSHIRT WITH COMPARABLE RIB AT NECKBAND AND CUFFS. SEAMING DETAILS WITH OVERLOCK STITCH AND RAW HEM

FABRIC: HEAVYWEIGHT COTTON

BOTTOM: WIDE LEG SWEATPANTS WITH COMPARABLE RIB V-SHAPED WAISTBAND. SIDE PANEL DETAILS WITH OVERLOCK STITCH

FABRIC: HEAVYWEIGHT COTTON

TRACK STAR

She exudes an untamed spirit, fearlessly embracing her wild side while effortlessly radiating coolness. Picture her as the epitome of a sporty thrill-seeker, embodying the essence of the "cool girl" with throwback silhouettes, cropped tops, low-rise proportions, and sporty details that inject an adrenaline rush into her style. Drawing inspiration from traditional collegiate palettes and infusing them with athletic, comfortable materials, her look evolves Y2K references with a back to school spirited European flair. With a preference for worn-in, soft cottons, sporty track pant materials, and retro touches reminiscent of playful vintage tomboy fashion, she exudes an energetic and impactful presence. All grounded with new go-to basics in denim for a distinctively No Boundaries attitude



LET'S GO
OUT!



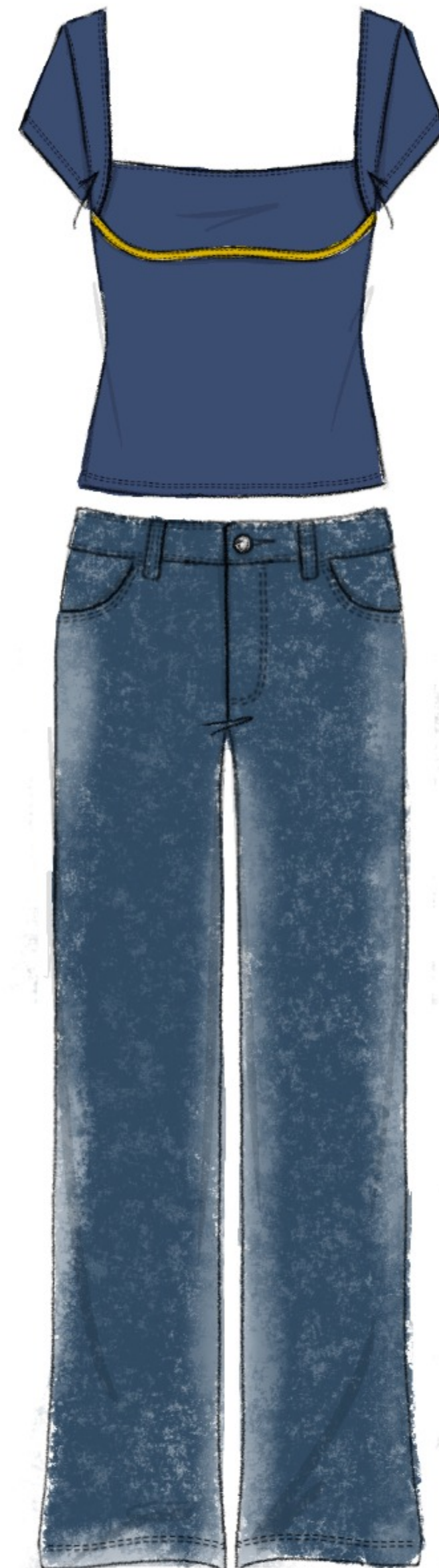
TRACK STAR



KEY COLOR AND FABRIC



OCCASION: SOCIAL ACTIVITY



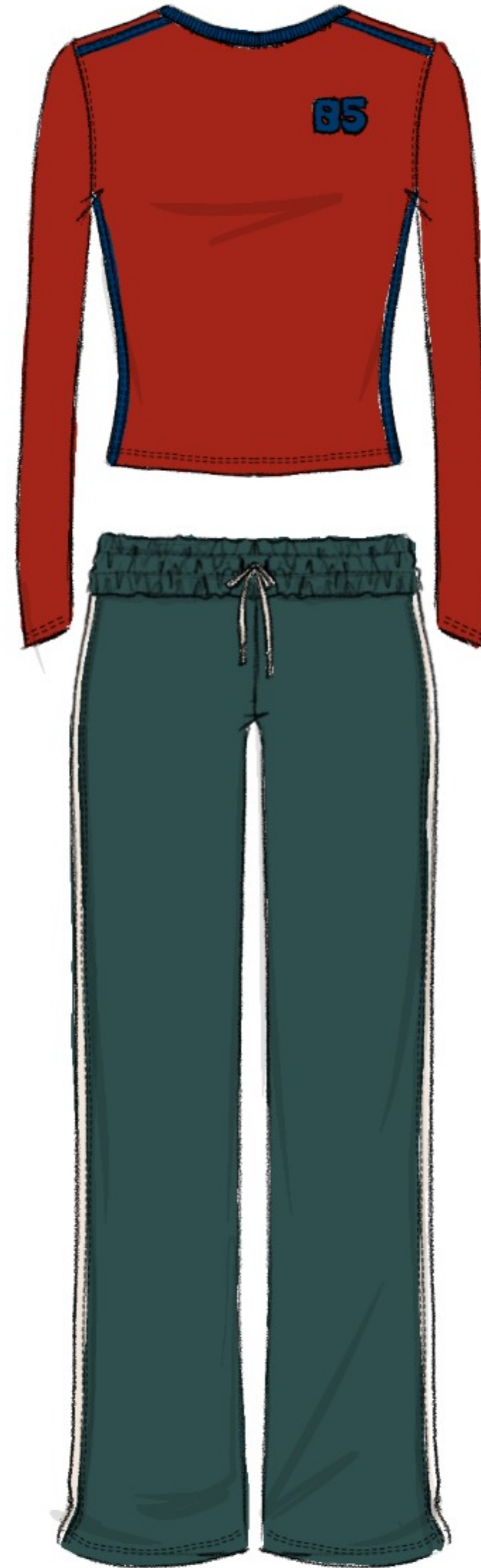
TOP: SQUARE NECK CAP SLEEVE TOP WITH UNDERBUST DETAIL

FABRIC: LUXE JERSEY

BOTTOM: LOW RISE WIDE LEG JEANS WITH VINTAGE ACID WASH

FABRIC: STRETCH DENIM

OCCASION: OUT AND ABOUT



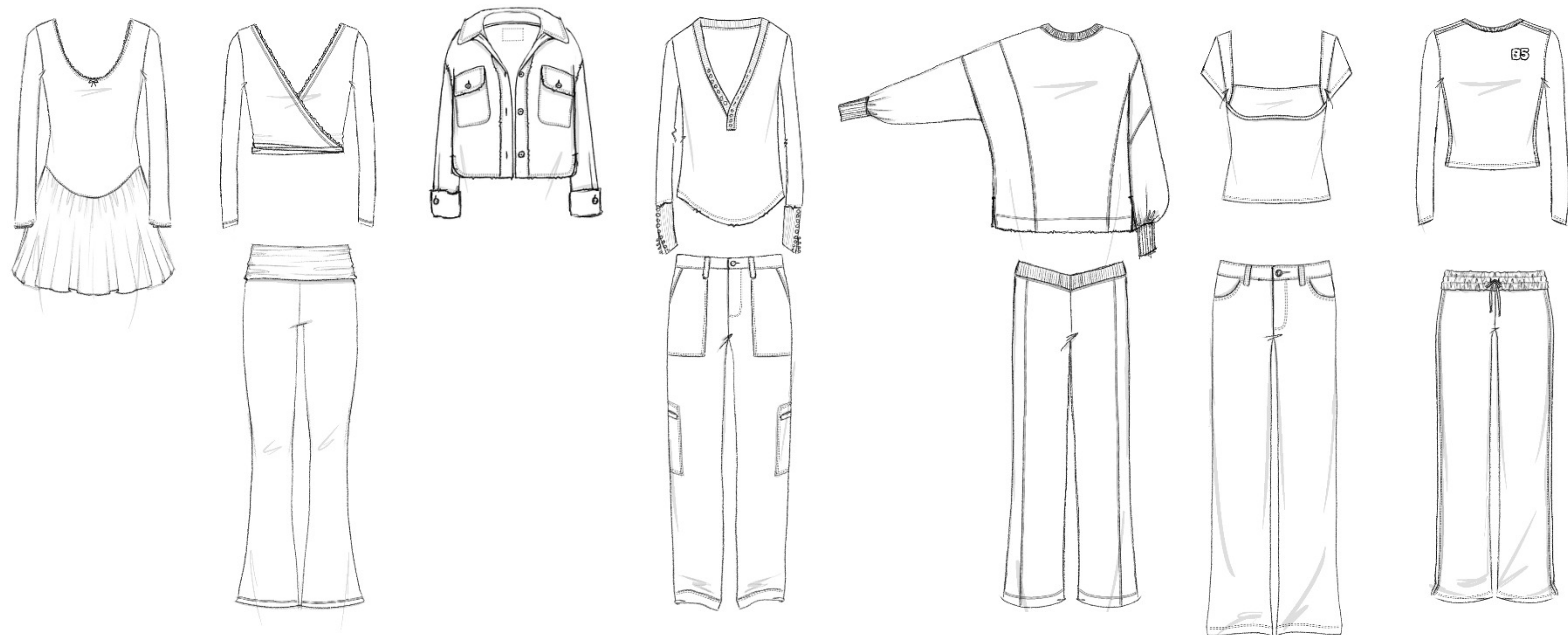
TOP: LONG SLEEVE TOP WITH CONTRAST RIB NECKBAND, SIDE SEAM PANEL, AND NUMBER GRAPHIC

FABRIC: 1X1 RIB

BOTTOM: MID RISE WIDE LEG TRACK PANT WITH CONTRAST DRAWSTRING AND SIDE PANEL

FABRIC: HEAVYWEIGHT COTTON, POLY

COLLECTION



Walmart 

Thank you!

hannahfixtm@gmail.com

