

Sofia Vergara

summer '25

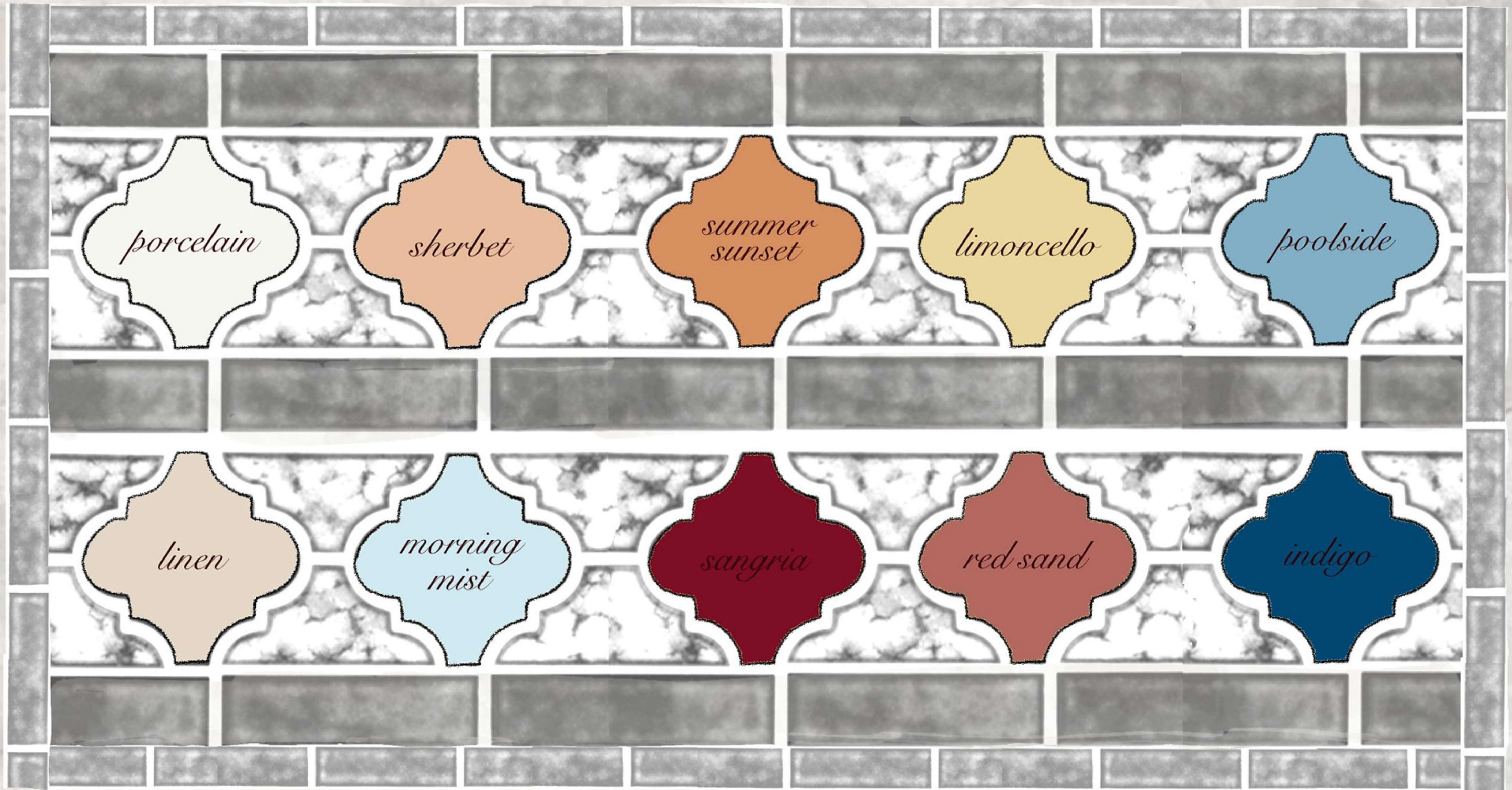


Rustic Summer

She's feminine, adventurous, and effortlessly cool. Infuse tuscan references with laid back beach side energy: Think sexy, timeless silhouettes, relaxed easy proportions & raw details with an elegant, crafty attitude. Sun-bleached warm tones and retro washed-out neutrals are key. Ocean side, lived-in washes, & shell details evolve 70's references with a sensual, tarnished edge. Textured wovens, moody printed chiffon, & touches of sexy, vintage femme give her a raw, delicate charm. She represents a lifestyle characterized by indulgence, enjoyment of life's pleasures, and a sense of carefree sophistication for a distinctively Sofía Vergara attitude. A true cross-generational appeal.



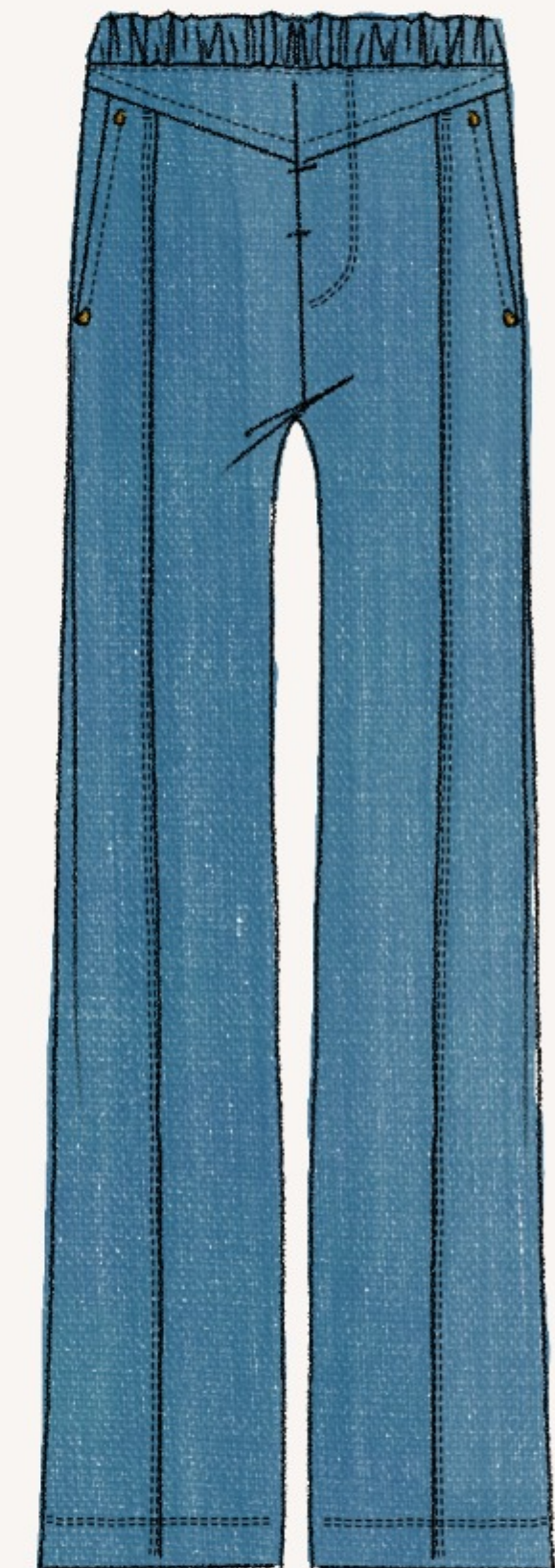
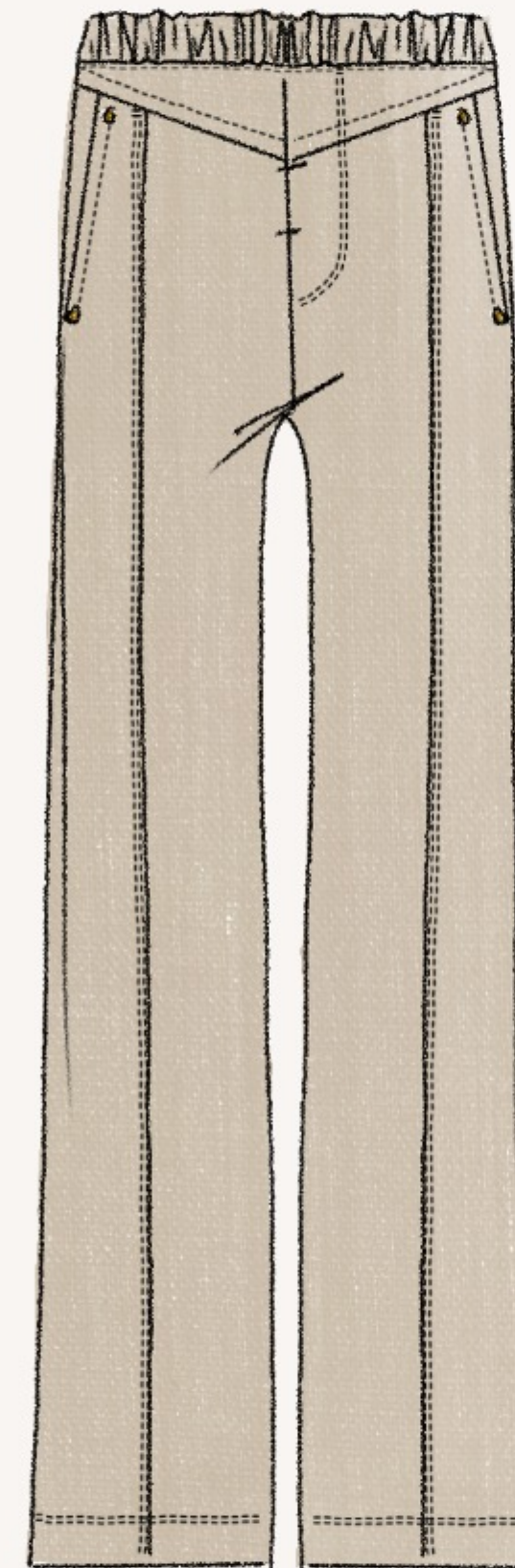
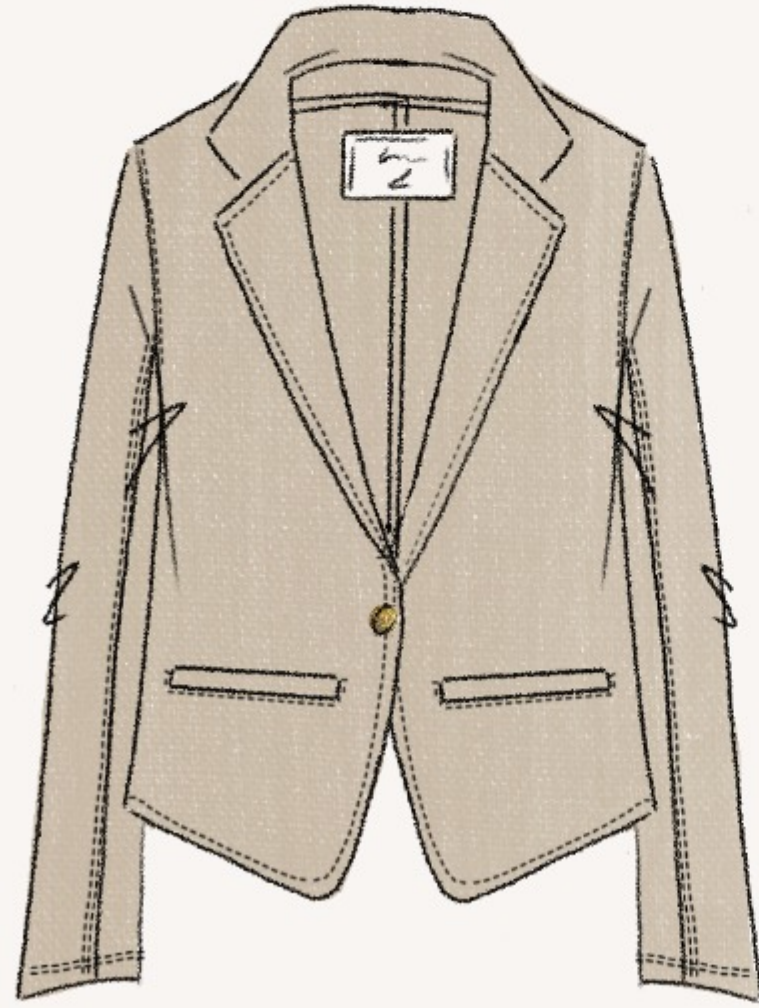
Key Color



Key Fabric



off to work



BLAZER: CROPPED BLAZER WITH GOLD BUTTON CLOSURE, FRONT POCKETS, AND ANGLED HEM. (FABRIC: LINEN)
BODYSUIT: SHORT SLEEVE RAGLIN HENLEY BODYSUIT WITH CROCHET TRIM AT NECKLINE AND PLACKET. (FABRIC: WASHED COTTON SPAN)
SHORT: MID-RISE WIDE LEG DRESS SHORT WITH FAUX FLY, ANGLED YOKE, SEAMING DETAILS, AND RIVETS. (FABRIC: LINEN)
PANT: MID-RISE WIDE LEG DRESS PANT WITH FAUX FLY, ANGLED YOKE, SEAMING DETAILS, AND RIVETS. (FABRIC: LINEN)

happy hour / barbecue



MAXI DRESS : RELAXED MAXI DRESS WITH PLUNGE NECKLINE, FORWARD SHOULDER SEAM, ELASTIC UNDERBUST DETAILS, AND ROPE TIE AT CENTER FRONT. (FABRIC: CHIFFON)

MINI DRESS : EASY MINI DRESS WITH SMOCKED PLUNGE NECKLINE, RUFFLE SLEEVE INTO PRINCESS SEAM DETAIL, SMOCKED WAIST AND BUILT IN SHORTS. (CRINKLE CREPE)

MIDI DRESS: RELAXED MIDI BUTTON DOWN DRESS WITH CROPED SLEEVE, COLLAR, FUNCTIONAL TIE AT WAIST, AND SHELL BUTTONS . (FABRIC: COTTON POPLIN)

by the water



JACKET: OVERSIZED JACKET WITH FRONT AND SIDE POCKETS, LACE UP SLEEVE AND SEAMING DETAILS, AND GOLD ACCENTS. (FABRIC: LIGHT WASH DENIM)

DRESS OPT.1: MAXI RACERBACK DRESS WITH ASYMMETRICAL HEM AND RIB DETAILS AT NECKLINE, ARMHOLE, AND HEM. (FABRIC: CROCHET)

DRESS OPT.2: MINI DRESS WITH FIT AND FLARE LING SLEEVES, AND RIB DETAILS AT NECKLINE, ARMHOLE, AND HEM. (FABRIC: CROCHET)

the travel shop



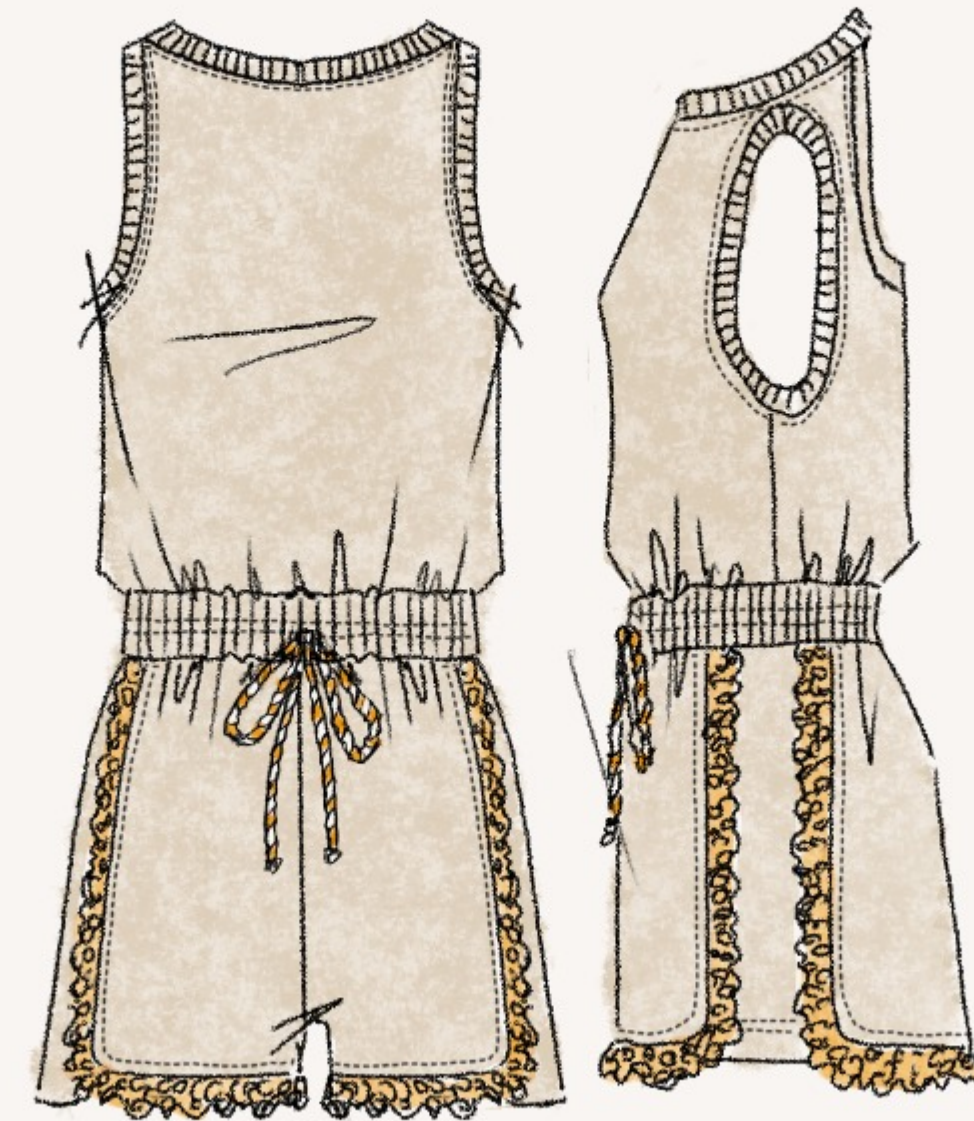
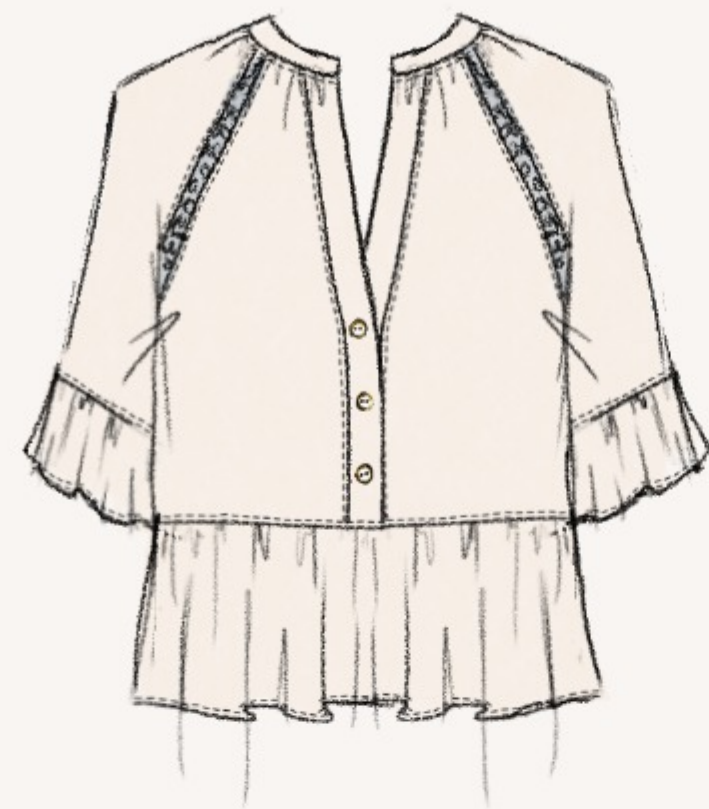
SWEATSHIRT OPT.1: CROPPED OVERSIZED CREWNECK WITH CROCHET TRIM AT ARMHOLE AND DORITO. (FABRIC: COTTON TERRY)

SWEATSHIRT OPT.2: CROPPED OVERSIZED CREWNECK WITH CROCHET PIECING AT SLEEVE, AND EMBO AT NECKLINE. (FABRIC: COTTON TERRY)

TOP: V-NECK FULL LENGTH TEE WITH RAW EDGE AT NECKLINE AND HEM. SIDE SLITS AT SIDE SEAMS. (FABRIC: WASHED COTTON SPAN)

SWEATPANT: MID-RISE FIT RELAXED FLARE SWEATPANT WITH V-SHAPED ELASTIC WAISTBAND, AND CROCHET INSERT AT SIDE SEAM. (FABRIC: COTTON TERRY)

out and about



TOP OPT.1: SPLIT NECK HENLEY POPOVER WITH CROCHET LACE INSERT AT RAGLIN SEAM AND RUFFLE DETAILS. (FABRIC: CRINKLE CREPE)

TOP OPT.2: SPLIT NECK POPOVER WITH STITCH DETAIL AT PLACKET AND SMOCKED RUFFLE SLEEVE DETAIL. (FABRIC: COTTON POPLIN)

SHORT: HIGH WAISTED SHORTS WITH FRONT PATCH POCKETS AND BUTTON WAISTBAND DETAIL. (FABRIC: LIGHT WASH DENIM)

JUMPER: RELAXED FIT JUMPER WITH FUNCTIONAL TWO TONED ROPE DRAWCORD, AND CROCHET TRIM DETAILS. (FABRIC: LIGHT WEIGHT COTTON TERRY)

weekend away



SHIRT: OVERSIZED CAMP SHIRT WITH SHELL BUTTON DETAIL. (FABRIC: LACE)

TANK: FULL LENGTH TANK WITH RAW EDGING AND SEAMING DETAILS. (FABRIC: WASHED COTTON SPAN)

SHORT: MID-RISE RELAXED FIT SHORTS WITH FUNCTIONAL ROPE DRAWCORD, FRONT POCKETS, AND SIDE SLIT DETAILS. (FABRIC: LACE)

PANT: MID-RISE RELAXED BOOTLEG PANT WITH FUNCTIONAL ROPE DRAWCORD, FRONT POCKETS, AND SIDE SLIT DETAILS. (FABRIC: LACE)





Thank you!
hannahfixtm@gmail.com

